

# ZOOMLION

– så kan du nå det hele

en del af **Horsens Lift**

75 60 19 69

# ZOOMLION MICRO SCISSOR LIFTS

Comply with CE/ANSI/CSA Standard



## HIGHLIGHTS

### High Performance

- ▶ Efficient electric direct drive system
- ▶ Compact dimensions ideal for low and tight access applications
- ▶ Lightweight only 1975lb/895kg
- ▶ Climbing up 30 percent grade slopes in a stowed position
- ▶ A maximum work height of 21ft 4in/6.5m

### Cost-Effectiveness

- ▶ Modularized and unitized parts design ideal for maintenance
- ▶ Drawer type tray easy to service
- ▶ Robust & build to last, reliable, and safe



## FEATURES

### Standard Features

Proportional controls	On-board diagnostic
All motion alarm	Over tilt protective system
Fold-down handrails	Forklift pockets
Flashing amber beacon	Drivable at full height
Self-closing entry gate	Hour meter
Active pothole protection system	Extension deck (unidirectional)
Autobrake system	Charging protection system
Emergency descent system	Scissor maintenance prop
Emergency stop button	Load sensing system
Maintenance-free battery	AC power to platform
Horn	

### Accessories & Options

- ▶ Platform work lights
- ▶ Air line to platform
- ▶ Overhead protection bar



## ACCESS WITH ZOOMLION GREEN

Phone: 0086(731)-88353680 0086(731)-88250971  
E-mail: awm@zoomlion.com

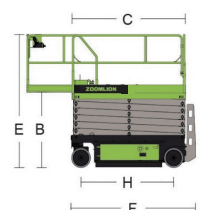
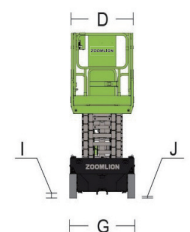
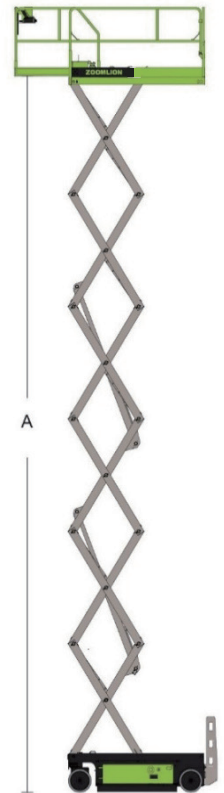
Add: ZOOMLION Wangcheng Industrial Park, Tengfei Road 997, Changsha, Hunan, China  
Web: [www.en.zoomlion.com](http://www.en.zoomlion.com)

# MAIN SPECS OF MICRO SCISSOR LIFTS

## ZS0407DC/ZS0407DC-Li/ZS0607DCS

Comply with CE/ANSI/CSA Standard

Model	ZS0407DC		ZS0407DC-Li		ZS0607DCS	
	Imperial	Metric	Imperial	Metric	Imperial	Metric
Size						
Work Height	21ft 4in	6.5m	21ft 4in	6.5m	25ft 7in	7.8m
A-Platform Height-Elevated	14ft 9in	4.5m	14ft 9in	4.5m	19ft	5.8m
B-Platform Height-Stowed	3ft 1in	0.95m	3ft 1in	0.95m	3ft 5in	1.05m
C-Platform Length	4ft 3in	1.29m	4ft 3in	1.29m	5ft 5in	1.65m
D-Platform Width	2ft 4in	0.7m	2ft 4in	0.7m	2ft 5in	0.74m
Platform Extension	2ft	0.6m	2ft	0.6m	3ft	0.91m
E-Overall Height (Rails Up)	6ft 9in	2.05m	6ft 9in	2.05m	7ft 3in	2.20m
Overall Height (Rails Down)	5ft 7in	1.7m	5ft 7in	1.7m	5ft 10in	1.79m
F-Overall Length	4ft 9in	1.44m	4ft 9in	1.44m	6ft 1in	1.85m
G-Overall Width	2ft 6in	0.76m	2ft 6in	0.76m	2ft 6in	0.77m
H Wheelbase	3ft 5in	1.05m	3ft 5in	1.05m	4ft 6in	1.37m
I-Ground Clearance (Stowed)	2.4in	0.06m	2.4in	0.06m	2.4in	0.06m
J-Ground Clearance (Raised)	0.65in	0.017m	0.65in	0.017m	0.65in	0.016m
Performance						
Platform Capacity	530lb	240kg	530lb	240kg	510lb	230kg
Capacity on Deck Extension	220lb	100kg	220lb	100kg	250lb	113kg
Max. Number of Workers	2		2		2	
Drive Speed (Stowed)	2.5mph	4km/h	2.5mph	4km/h	1.88mph	3km/h
Drive Speed (Raised)	0.5mph	0.8km/h	0.5mph	0.8km/h	0.5mph	0.8km/h
Turning Radius (Inside)	1ft 4in	0.4m	1ft 4in	0.4m	1ft 4in	0.4m
Turning Radius (Outside)	5ft 3in	1.6m	5ft 3in	1.6m	6ft 7in	2m
Lifting Motor	24V/1.2KW		24V/1.2KW		24V/2.2KW	
Drive Motor	24V/2×0.45KW		24V/2×0.45W		24V/2×0.75KW	
Up/Down Time	23/25s		23/25s		20s/24s	
Gradeability	30%(17°)		30%(17°)		25%(14°)	
Max. Working Slope (Lateral/Vertical)	1.5°/3°		1.5°/3°		1.5°/3°	
Control	Proportional Control		Proportional Control		Proportional Control	
Drive	Rear Wheels		Rear Wheels		Rear Wheels	
Brake	Rear Wheels		Rear Wheels		Rear Wheels	
Tire	Ø9in×3in	Ø230mm×80mm	Ø9in×3in	Ø230mm×80mm	φ12in×4in	φ305mm×100mm
Power						
Battery	2×12V/85Ah		80Ah Li-ion Battery		2×12V/150Ah	
Charger	24V/15A		24V/15A		24V/17A	
Weight						
Gross	1975lb	895kg	1975lb	895kg	3164lb	1435kg





# ZOOMLION

## SCISSOR LIFTS

### DC-L SERIES

Comply with CE/ANSI/CSA Standard

#### HIGHLIGHTS

##### Cutting-Edge Driving System with Lithium Power

- ▶ 5-year warranty for Li-ion battery
- ▶ Maintenance-free and durable Li-ion battery with a triple longer lifetime than traditional
- ▶ Quick-charge technology save time
- ▶ Preheating function built-in for cold weather regions
- ▶ Smart Battery Management System (BMS) guarantees safety power

#### FEATURES

##### Standard Features

BMS(Battery Management System)	On-board diagnostic
Proportional controls	Over tilt protective system
All motion alarm	Active pothole protection system
Fold-down handrails	Drivable at full height
Flashing amber beacon	Hour meter
Self-closing entry gate	Extension deck (unidirectional)
Autobrake system	Charging protection system
Emergency descent system	Scissor maintenance prop
Emergency stop button	Forklift pockets
Load sensing system	AC power to platform
Horn	

##### Accessories & Options

- ▶ Platform work lights
- ▶ Air line to platform
- ▶ Overhead protection bar



## ACCESS WITH ZOOMLION GREEN

Phone: 0086(731)-88353680 0086(731)-88250971  
E-mail: awm@zoomlion.com

Add: ZOOMLION Wangcheng Industrial Park, Tengfei Road 997, Changsha, Hunan, China  
Web: www.en.zoomlion.com

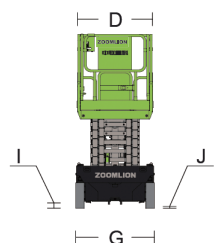
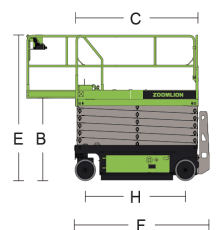
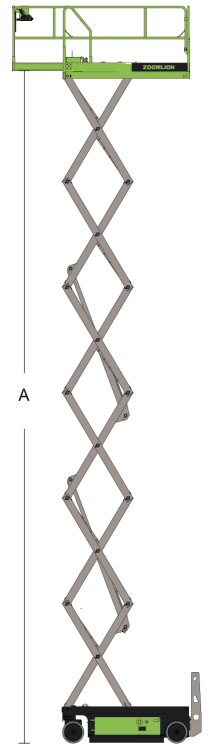


# MAIN SPECS OF SCISSOR LIFTS

## DC-Li

Comply with CE/ANSI/CSA Standard

Model	ZS0607DC-Li		ZS0808DC-Li		ZS0812DC-Li		ZS1012DC-Li		ZS1212DC-Li		ZS1414DC-Li	
	Imperial	Metric	Imperial	Metric	Imperial	Metric	Imperial	Metric	Imperial	Metric	Imperial	Metric
Size												
Work Height	25ft 7in	7.8m	32ft 10in	10.00m	32ft 10in	10.00m	38ft 9in	11.80m	45ft 3in	13.80m	51ft 6in	15.7m
A-Platform Height-Elevated	19ft	5.8m	26ft 3in	8.00m	26ft 3in	8.00m	32ft 2in	9.80m	38ft 9in	11.80m	44ft 11in	13.7m
B-Platform Height-Stowed	3ft 5in	1.05m	4ft 2in	1.26m	4ft 2in	1.26m	4ft 7in	1.39m	4ft 12in	1.52m	5ft 1in	1.54m
C-Platform Length	5ft 5in	1.65m	7ft 7in	2.30m	7ft 7in	2.30m	7ft 7in	2.30m	7ft 7in	2.30m	8ft 9in	2.67m
D-Platform Width	2ft 5in	0.74m	2ft 8in	0.81m	3ft 8in	1.12m	3ft 8in	1.12m	3ft 8in	1.12m	3ft 8in	1.12m
Platform Extension	3ft	0.91m	3ft	0.91m	3ft	0.91m	3ft	0.91m	3ft	0.91m	3ft	0.91m
E-Overall Height (Rails Up)	7ft 3in	2.20m	7ft 11in	2.4m	7ft 11in	2.4m	8ft 4in	2.53m	8ft 9in	2.66m	8ft 10in	2.68m
Overall Height (Rails Down)	5ft 10in	1.79m	6ft 3in	1.9m	6ft 2in	1.87m	6ft 7in	2m	6ft 12in	2.13m	7ft 1in	2.15m
F-Overall Length	6ft 1in	1.85m	8ft 2in	2.49m	8ft 2in	2.49m	8ft 2in	2.49m	8ft 2in	2.49m	9ft 5in	2.87m
G-Overall Width	2ft 6in	0.76m	2ft 8in	0.81m	3ft 9in	1.15m	3ft 9in	1.15m	3ft 9in	1.15m	4ft 7in	1.4m
H Wheelbase	4ft 6in	1.37m	6ft 1in	1.85m	6ft 1in	1.85m	6ft 1in	1.85m	6ft 1in	1.85m	7ft 3in	2.22m
I-Ground Clearance (Stowed)	2.4in	0.06m	4.5in	0.11m	4.5in	0.11m	4.5in	0.11m	4.5in	0.11m	4.5in	0.11m
J-Ground Clearance (Raised)	0.65in	0.016m	0.75in	0.02m	0.75in	0.02m	0.75in	0.02m	0.75in	0.02m	0.75in	0.02m
Performance												
Platform Capacity	510lb	230kg	510lb	230kg	990lb	450kg	770lb	350kg	770lb	350kg	570lb	260kg
Capacity on Deck Extension	250lb	113kg	250lb	113kg	250lb	113kg	250lb	113kg	250lb	113kg	250lb	113kg
Max. Number of Workers	2		2		Indoor: 2 Outdoor: 1		Indoor: 2 Outdoor: 1		3		2	
Drive Speed (Stowed)	2.5mph	4km/h	2.5mph	4km/h	2.5mph	4km/h	2.5mph	4km/h	2.5mph	4km/h	2.5mph	4km/h
Drive Speed (Raised)	0.5mph	0.8km/h	0.5mph	0.8km/h	0.5mph	0.8km/h	0.5mph	0.8km/h	0.5mph	0.8km/h	0.5mph	0.8km/h
Turning Radius (Inside)	4in	0.1m	4in	0.1m	4in	0.1m	4in	0.1m	4in	0.1m	4in	0.1m
Turning Radius (Outside)	5ft 3in	1.6m	6ft 11in	2.1m	7ft 3in	2.2m	7ft 3in	2.2m	7ft 3in	2.2m	8ft 6in	2.6m
Lifting Motor	24V/3.3KW		24V/3.3KW		24V/4.5KW		24V/4.5KW		24V/4.5KW		24V/4.5KW	
Drive Motor	24V/2×0.65KW		24V/2×0.75KW		24V/2×0.75KW		24V/2×0.75KW		24V/2×0.75KW		24V/2×0.75KW	
Up/Down Time	20s/24s		31s/40s		31s/40s		60s/35s		62s/42s		88/60s	
Gradeability	25%(14°)		25%(14°)		25%(14°)		25%(14°)		25%(14°)		25%(14°)	
Max. Working Slope (Lateral/Vertical)	1.5°/3°		1.5°/3°		2°/3°		1.5°/3°		1.5°/3°		1.5°/3°	
Control	Proportional Control		Proportional Control		Proportional Control		Proportional Control		Proportional Control		Proportional Control	
Drive	Front Wheels		Front Wheels		Front Wheels		Front Wheels		Front Wheels		Front Wheels	
Brake	Front Wheels		Front Wheels		Front Wheels		Front Wheels		Front Wheels		Front Wheels	
Tire	Ø13in ×4in	Ø323mm ×100mm	Ø15in ×5in	Ø381mm ×127mm	Ø15in ×5in	Ø381mm ×127mm	Ø15in ×5in	Ø381mm ×127mm	Ø15in ×5in	Ø381mm ×127mm	Ø15in ×5in	Ø381mm ×127mm
Power												
Battery	160Ah Li-ion		160Ah Li-ion		230Ah Li-ion		230Ah Li-ion		230Ah Li-ion		230Ah Li-ion	
Charger	24V/30A		24V/30A		24V/30A		24V/30A		24V/30A		24V/30A	
Charger (Option)	N/A		24V/60A		24V/60A		24V/60A		24V/60A		24V/60A	
Weight												
Gross	3210lb	1455kg	4610lb	2090kg	5620lb	2550kg	6460lb	2930kg	7075lb	3210kg	7560lb	3430kg



# ZOOMLION

## CRAWLER SCISSOR LIFTS

### ZS0610C/ZS0508C

Comply with CE Standard

#### HIGHLIGHTS

##### High Performance

- ▶ Rubber crawler provides small ground pressure and great obstacle crossing ability
- ▶ Pivot steering with good maneuverability
- ▶ Simple single handle control for steering and walking
- ▶ Work height of 8.8m with high working efficiency (ZS0610C only)

##### Cost Effectiveness

- ▶ Knuckles lubrication-free and maintenance-free
- ▶ AC motor full lifecycle maintenance-free

#### FEATURES

##### Standard Features

Proportional controls	Over tilt protective system
All motion alarm	Hour meter
Fold-down handrails	Extension deck (unidirectional)
Flashing beacon	Charging protection system
Self-closing entry gate	Scissor maintenance prop
Autobrake system	Forklift pockets
Emergency descent system	Load sensing system
Emergency stop button	AC power to platform
On-board diagnostic	
Horn	

##### Accessories & Options

- ▶ Platform work lights
- ▶ Air line to platform
- ▶ Overhead protection bar



## ACCESS WITH ZOOMLION GREEN

Phone: 0086(731)-88353680 0086(731)-88250971  
E-mail: awm@zoomlion.com

Add: ZOOMLION Wangcheng Industrial Park, Tengfei Road 997, Changsha, Hunan, China  
Web: www.en.zoomlion.com

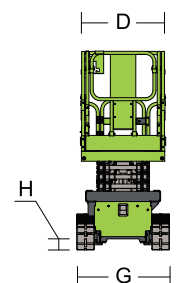
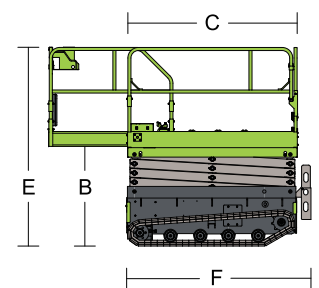
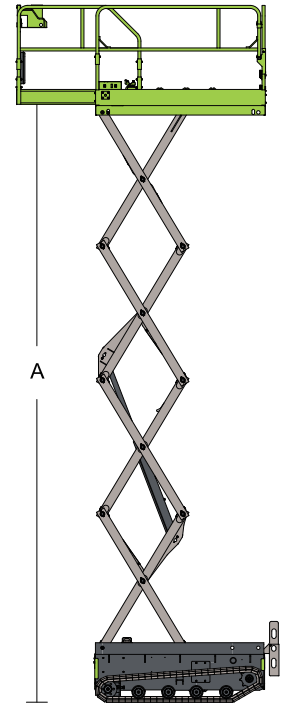


# CRAWLER SCSSIOR LIFTS

## ZS0610C/ZS0508C

Comply with CE Standard

Model	ZS0610C		ZS0508C	
	Imperial	Metric	Imperial	Metric
Size				
Work Height	28ft11in	8.80m	21ft 4in	6.5m
A Platform Height-Elevated	22ft4in	6.80m	14ft 9in	4.5m
B Platform Height-Stowed	3ft 8in	1.12m	3ft 3in	0.99m
C Platform Length	6ft4in	1.94m	4ft 3in	1.29m
D Platform Width	3ft1in	0.95m	2ft 4in	0.7m
Platform Extension	3ft	0.91m	2ft	0.6m
E Overall Height (Rails Up)	7ft5in	2.26m	6ft 11in	2.1m
Overall Height (Rails Down)	5ft10in	1.77m	5ft 9in	1.74m
F Overall Length	6ft11in	2.1m	4ft 9in	1.46m
G Overall Width	3ft5in	1.05m	2ft 8in	0.81m
H Ground Clearance	4.5in	0.127m	3in	0.07m
Performance				
Platform Capacity	550lb	250kg	530lb	240kg
Capacity on Deck Extension	250l	113kg	220lb	100kg
Max. Number of Workers	2		1	
Drive Speed (Stowed)	1.25mph	2km/h	1.25mph	2km/h
Drive Speed (Raised)	0mph	0km/h	0mph	0km/h
Turning Radius	0in	0m	0in	0m
Drive Motor	24V/2×1.8KW		24V/2×0.77kW	
Up/Down Time	34s/30s		23s/25s	
Gradeability	30%(17°)		25%(14°)	
Max. Working Slope (Lateral/Vertical)	2°/2°		1.7°/1.7°	
Drive	Rear Wheels		Rear Wheels	
Brake	Rear Wheels		Rear Wheels	
Power				
Battery	4×6V/220Ah		4×12V/115Ah	
Charger	24V/30A		24V/30A	
Weight				
Gross	3750lb	1700kg	1975lb	895kg



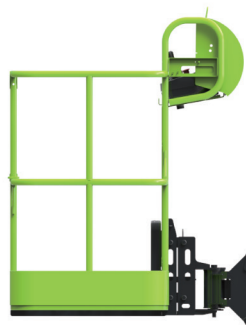
# ZOOMLION

## ARTICULATING BOOM LIFTS

### ZA10RJE

Comply with CE/ANSI/CSA Standard

#### HIGHLIGHTS



- ▶ Center layout, great structural rigidity, and small boom deflection
- ▶ Advanced dual control system (valve control + pump control) offers a energy-saving, smooth and efficient control
- ▶ Accurate and efficient AC motor provides strong power and stable control
- ▶  $\pm 90^\circ$  Jib rotation offers great up and over height
- ▶ Compact dimension of 1.2m stowed width, ideal for narrow working conditions
- ▶ Tubular batteries feature long working time and lifespan, and easy for maintenance

#### FEATURES

##### Standard Features

Proportional control	Load sensing system
All motion alarm	4.3' LED display
Flashing beacon	Horn
Self-closing entry gate	Timer
Emergency descent system	Jib rotation
Emergency stop button	Vertical lifting function
Auto-leveling system	Thumb joystick for steering
On-board diagnostic system	35A battery smart charger
Over tilt protection system	Electric quantity display
Solid seamless tire	Low electric quantity protection

##### Accessories & Options

- ▶ Platform light
- ▶ AC power to platform
- ▶ Air line to platform
- ▶ Electric-auxiliary pump
- ▶ Platform console cover (Adjust rated capacity to 210kg)
- ▶ Secondary guarding system



## ACCESS WITH ZOOMLION GREEN

Phone: 0086(731)-88353680 0086(731)-88250971  
E-mail: awm@zoomlion.com

Add: ZOOMLION Wangcheng Industrial Park, Tengfei Road 997, Changsha, Hunan, China  
Web: www.en.zoomlion.com

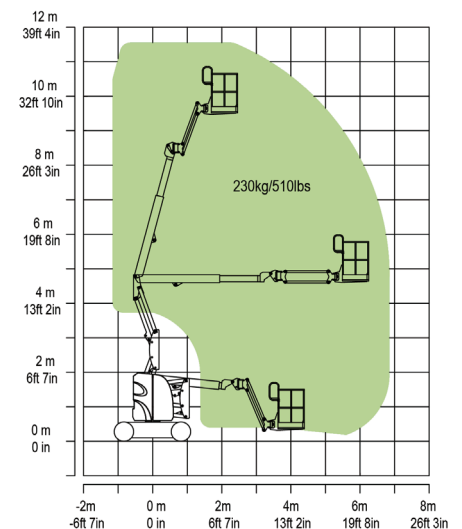
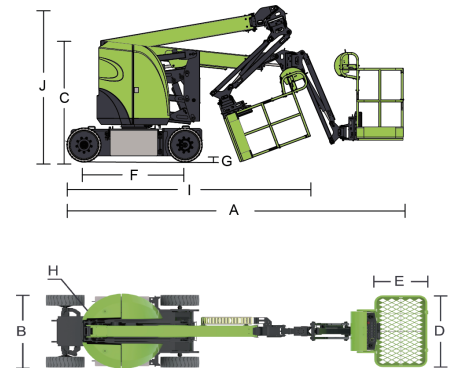


# MAIN SPECS OF ARTICULATING BOOM LIFTS

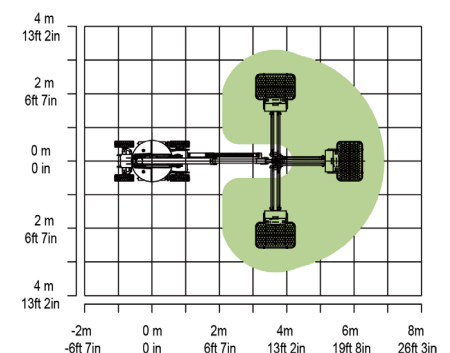
## ZA10RJE

Comply with CE/ANSI/CSA Standard

Model	ZA10RJE	
	Imperial	Metric
Dimension		
Work Height	37ft 11in	11.55m
Platform Height	31ft 4in	9.55m
Horizontal Outreach	20ft 6in	6.25m
Up and Over Height	15ft 1in	4.6m
A - Stowed Length	18ft 1in	5.5m
B - Stowed Width	3ft 11in	1.19m
C - Stowed Height	6ft 6in	1.98m
D - Platform Length	3ft 10in	1.17m
E - Platform Width	2ft 6in	0.76m
Jib length	4ft 1in	1.24m
F - Wheelbase	5ft 5in	1.65m
G - Ground Clearance	4in	0.1m
I - Transport Length (Jib tucked under)	13ft	3.95m
J - Transport Height (Jib tucked under)	8ft	2.45m
Performance		
Platform Capacity	507lbs	230kg
Drive Speed	3.11mph	5km/h
Gradeability	35% (19°)	35% (19°)
Turning Radius (Inside)	5ft 7in	1.7m
Turning Radius (Outside)	10ft 8in	3.25m
Turntable Swing	355° non-continuous	
Jib Swing	±90°	
Platform Rotation	±90°	
H-Tail Swing	0m	
Max. Wind Speed	28mph	12.5m/s
Power		
Battery	24×2V/330Ah	
Charger	48V/35A	
Drive Motor	AC 48V/6hp	AC 48V/3.3kW
Lift Motor	DC 48V/6hp	DC 48V/4.5kW
Auxiliary Power	Standard: Manual pump Option: Electric pump	
Hydraulic Tank Capacity	3.96(us gal)	15L
Tire		
Type	22X7X17.75'seamless tire	
Weight		
Gross	14440lbs	6550kg



Range of Motion ZA10RJE



Range of Jib Swing Motion ZA10RJE



**ZOOMLION**

# **NEW** ROUGH TERRAIN **ZA16JERT** ELECTRIC ARTICULATING BOOM LIFT

Comply with CE/ANSI Standard

## HIGHLIGHTS

- ▶ Center layout, great structural rigidity, and small boom deflection
- ▶ Accurate and efficient traveling AC drive system provides strong power and stable control, motor maintenance-free
- ▶ First electrical off-road articulating boom lift of 16m height with strong power suits for complicated working conditions



## FEATURES

### Standard Features

- Proportional control
- All motion alarm
- Flashing beacon
- Self-closing entry gate
- Emergency descent system
- Emergency stop button
- Auto-leveling system
- On-board diagnostic system
- Over tilt protection system
- Load sensing system
- 4.3" LED display
- Horn
- Secondary guarding system

### Accessories & Options

- AC power to platform
- Air line to platform
- Non-marking tire
- Platform work lights
- Low-temperature Hydraulic Oil
- Synthetic Biodegradable Hydraulic Oil

**ACCESS WITH ZOOMLION GREEN**

Phone: 0086(731)-88253680 0090(731)-88250973  
E-mail: awm@zoomlion.com

Add: ZOOMLION Wangcheng Industrial Park, Tangfei Road 997, Changsha, Hunan, China  
Web: www.en.zoomlion.com



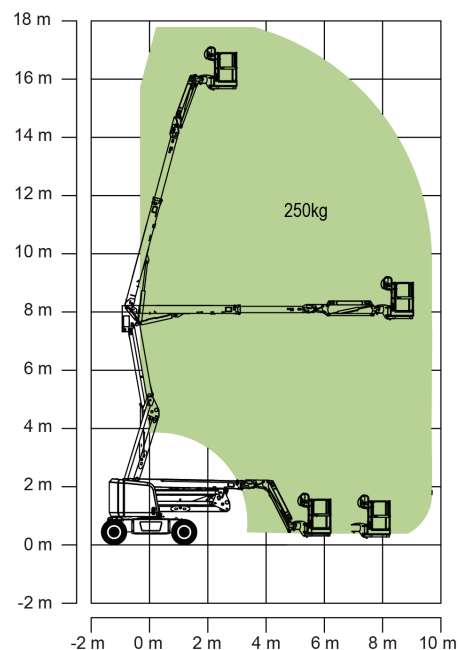
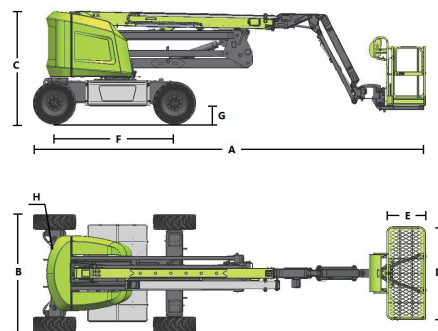
**ZOOMLION**

# ROUGH TERRAIN ELECTRIC ARTICULATING BOOM LIFT

**NEW** ROUGH TERRAIN

**ZA16JERT** Comply with CE/ANSI Standard

Model	ZA16JERT	
	Imperial	Metric
Size		
Work Height	58ft 5in	17.8m
Platform Height	51ft 10in	15.8m
Horizontal Outreach	31ft 11in	9.72m
Up and Over Height	26ft 3in	8m
A - Stowed Length	25ft 3in	7.7m
B - Stowed Width	7ft 6in	2.3m
C - Stowed Height	7ft 4in	2.23m
D - Platform Length	6ft	1.83m
E - Platform Width	2ft 6in	0.76m
Jib Length	5ft	1.53m
F - Wheelbase	7ft 9in	2.36m
G - Ground Clearance	1ft 2in	0.36m
Performance		
Platform Capacity	550 lb	250kg
Drive Speed	3.79 mph	6.1km/h
Gradeability	45%(24°)	
Axles Oscillation	0.20m	8in
Turning Radius (Inside)	2.06m	6ft 9in
Turning Radius (Outside)	4.78m	15ft 8in
Turntable Swing	360° non-continuous	
Platform Rotation	±90°	
H-Tail Swing	8in	0.2m
Max. Wind Speed	27.96mph	12.5m/s
Power		
Battery	24×2V/320Ah	
Charger	48V/35A	
Drive Motor	AC 32V	
Lift Motor	AC 32V	
Auxiliary Power	12V DC Electrical pump	
Hydraulic Tank Capacity	30L	7.9 (us gal)
Tire		
Type	33×12 Foam-filled tire	
Weight		
Gross	7300kg	16093lb



Range of Motion ZA16JERT



# ACCESS WITH ZOOMLION GREEN



## **NEW** ELECTRIC ZT22JE/ZT26JE

Comply with CE/ANSI/CSA Standard



Zero Emission  
Low Noise



300/454kg  
Dual Capacity



24° Gradeability



4WD

## HIGHLIGHTS

- ▶ Customized lithium-ion battery features green, environmental protection, lownoise and zero-emission, ideal for construction and plant maintenance.
- ▶ lithium-ion batteries combined with excellent energy management system provide longer running time.
- ▶ Low-temperature regenerative current control and power self-adaptive control effectively improve the safety of Li-ion battery and greatly prolong the batteries service life of at least 10%.
- ▶ Provide a variety of standard charging plugs and 10A/16A/32A multi-power optional charging mode featuring strong charging adaptability.
- ▶ Brand-new appearance with lightweight GFRP composite material hood and integrally formed coating features anti-corrosion, heat preservation, aging resistance and easy cleaning.
- ▶ Assembled large-opening component box, open-close hood, and a variety of reserved inspection holes easy to service.
- ▶ Accurate and efficient traveling AC drive system provides strong power and stable control. Gradeability reaches 45% and motor is maintenance-free for its lifetime.

## FEATURES

### Standard Features

Horn	Auto-leveling system
Proportional control	On-board diagnostic system
All motion alarm	Tilt protection system
Flashing beacon	Oscillating axle
Self-closing entry gate	Load sensing system
Emergency descent system	4.3' Led display
Emergency stop button	Swing-out engine tray

### Accessories & Options

- ▶ Platform work light
- ▶ Secondary guarding system
- ▶ AC power to platform



**ZOOMLION**

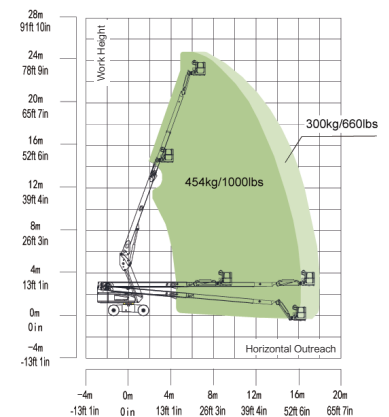
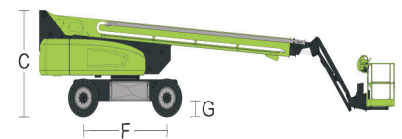
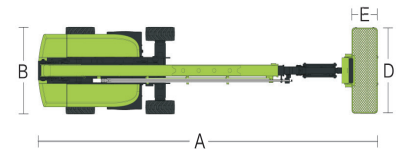
# ELECTRIC TELESCOPIC BOOM LIFTS



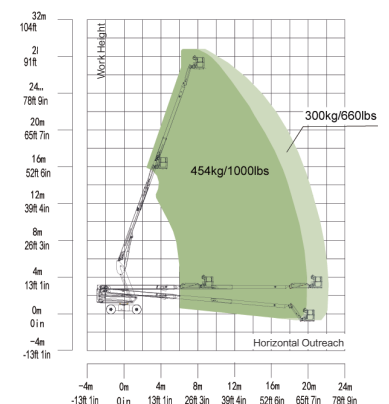
**NEW ELECTRIC ZT22JE/ZT26JE**

Comply with CE/ANSI/CSA Standard

Model	ZT26JE		ZT22JE	
Size				
	Metric	Imperial	Metric	Imperial
Work Height	28.70m	94ft 2in	24.40m	80ft 1in
Platform Height	26.70m	87ft 7in	22.40m	73ft 6in
Horizontal Outreach	22.1m	82ft 6in	17.9m	58ft 9in
A - Stowed Length	11.91m	39ft 1in	10.3m	33ft 10in
B - Stowed Width	2.49m	8ft 2in	2.49m	8ft 2in
C - Stowed Height	2.82m	9ft 3in	2.76m	9ft 1in
D - Platform Length	2.44m	8ft	2.44m	8ft
E - Platform Width	0.91m	3ft	0.91m	3ft
F - Wheelbase	2.80m	9ft 2in	2.52m	8ft 3in
Tread	2.49m	6ft 11in	2.49m	6ft 12in
G - Ground Clearance	0.41m	1ft 4in	0.41m	1ft 4in
Performance				
Platform Capacity (Unrestricted/Restricted)	300/454kg	660/1000lb	300/454kg	660/1000lb
Drive Speed (Stowed)	5.5km/h	3.42mph	5.5km/h	3.42mph
Gradeability	45% (24°)		45% (24°)	
Turning Radius (Inside)	3.11m	10ft 2in	2.72m	8ft 11in
Turning Radius (Outside)	6.16m	20ft 3in	5.58m	18ft 4in
Turntable Swing	360° continuous		360° continuous	
Platform Rotation	±90°		±90°	
Tail Swing	1.61m	5ft 3in	1.61m	5ft 3in
Jib Rotation	130° ( - 55° ~75° )		130° ( - 55° ~75° )	
Max. Wind Speed	12.5m/s	28mph	12.5m/s	28mph
Power				
Battery	80V		80V	
Charger	5KW/80V		5KW/80V	
Drive Motor	5.2KW		4.2KW	
Lifting Motor	30KW		21KW	
Auxiliary Power	12V DC		12V DC	
Hydraulic Tank	120L	32 US gal	120L	32 US gal
Tire				
Type	15-625 Foam-filled tire		355/55D-625 Foam-filled tire	
Weight				
Gross	17600kg	39462lb	13200kg	29101lb



Range of Motion ZT22JE



Range of Motion ZT26JE

NOTER

NOTER



